

Models 7041 Rear Locking Planar Blindmate® Connector

dc to 18.0 GHz

Lower Cost Design



Specifications

NOMINAL IMPEDANCE: 50 Ω nominal

FREQUENCY RANGE: dc to 18.0 GHz

INSERTION LOSS (dB) & SWR:

Frequency (GHz)	Loss (maximum)	SWR (maximum)
dc - 6	0.40	1.20
6 - 18	0.60	1.40

INSERTION LOSS

REPEATABILITY: ±0.1 dB typical

MECHANICAL LIFE: 25,000 matings minimum

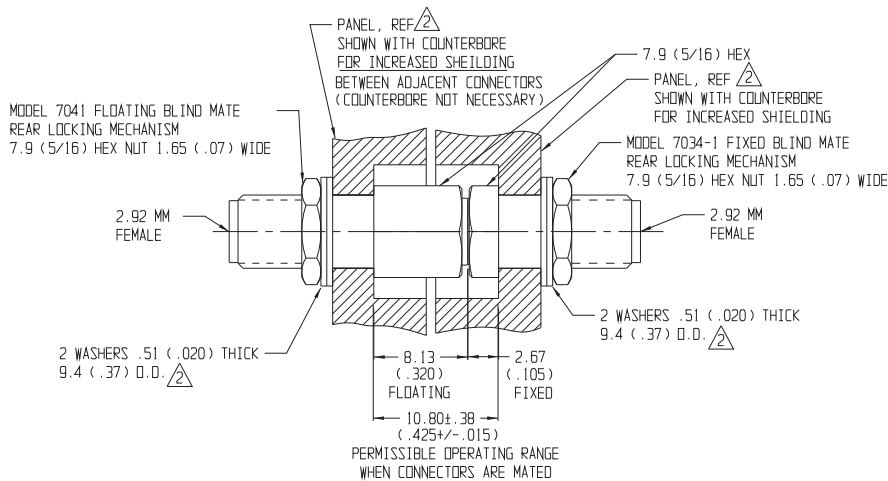
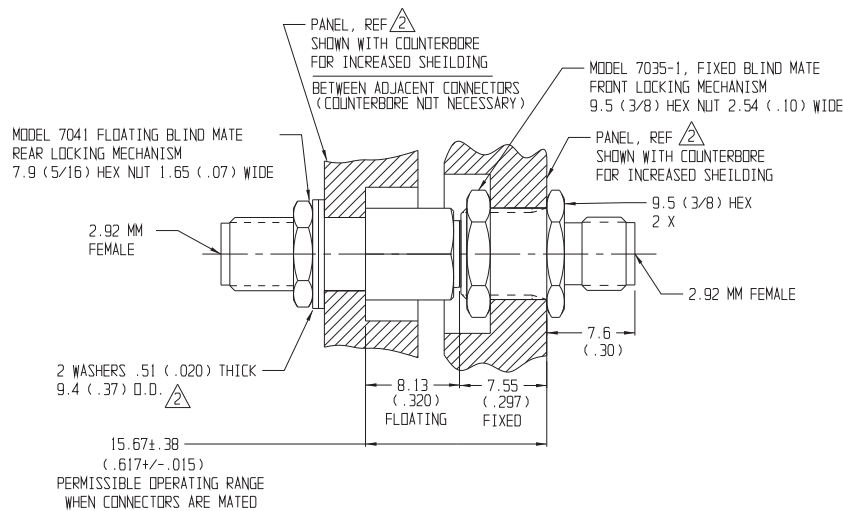
RADIAL OFFSET ALLOWED: ±0.02 inches per pair

TEMPERATURE RANGE: -50°C to +100°C

CONNECTORS: Stainless Steel 2.92mm connector with gold plated contacts - mate nondestructively with SMA connectors per MIL-C-39012, 3.5mm, SMK, and other 2.92mm connectors.

WEIGHT: 2 oz, (56.7 g) maximum

PHYSICAL DIMENSIONS:



- NOTES: 1. All dimensions are given in mm (inches) and are nominal, unless otherwise specified.
2. Maximum panel thickness for Model 7041 is 4.9 (0.195). Panel flange thickness less than 4.2 (0.165). Installation requires appropriate washer.
3. * when mating surface have been maintained and kept clean.