

## Model 7010 PLANAR BULKHEAD with DC Block

### 10 MHz to 26.5 GHz

#### 2.92mm Connectors to Planar Interface



### Features

- /// Usable to 40 GHz.
- /// Eliminates the requirement for a separate dc Block to protect instrument front ends.
- /// Offers the user multiple connector options and quick replacement of damaged connectors.
- /// Provides all the features and versatility of the PLANAR CROWN® Connector System.

### Specifications

**NOMINAL IMPEDANCE:** 50 Ω  
**FREQUENCY RANGE:** 10 MHz to 26.5 GHz

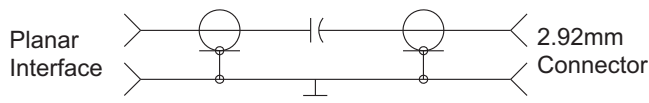
| MAXIMUM SWR:    |      |
|-----------------|------|
| Frequency (GHz) | SWR  |
| 10 MHz - 18     | 1.20 |
| 18 - 26.5       | 1.25 |

| INSERTION LOSS & REPEATABILITY (dB): |      |
|--------------------------------------|------|
| Frequency (GHz)                      | Loss |
| 10 MHz - 18                          | 0.6  |
| 18 - 26.5                            | 0.9  |

**Note:** SWR and Insertion Loss specifications are based on a mated pair of Models 7010-X and 7005A-XX PLANAR CROWN® connector types.

**DC BLOCK CAPACITOR RATING:** 1,700 pf minimum;  
 + 50 Vdc working voltage

### SCHEMATIC DIAGRAM:



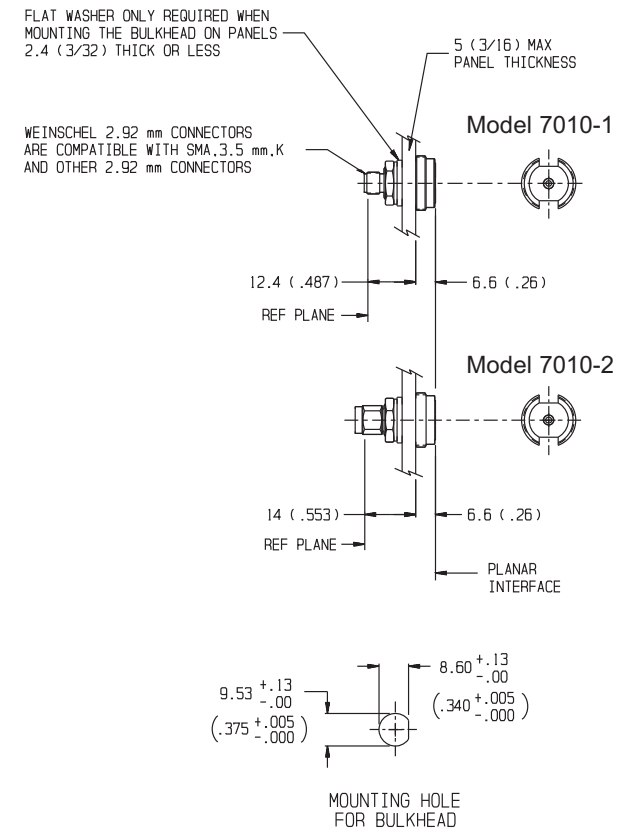
**TEMPERATURE RANGE:** 0 °C to +60 °C (operating)-40 °C to +70 °C (non-operating)

**CONNECTORS:** Primary connector is 2.92 mm female or male connector, with a PLANAR INTERFACE on opposite end. Contact Pin Recession of 2.92mm is 0 to 0.076 mm (0 to 0.003 in) for reference plane. Add -1 for female 2.92 mm connector or -2 for 2.92mm male connector

**CONSTRUCTION:** Passivated Stainless steel body and connectors; gold plated beryllium copper contacts

**WEIGHT:** Net: 20 g (0.7 oz)

### PHYSICAL DIMENSIONS:



**NOTE:** All dimensions are given in mm (inches) and are maximum, unless otherwise specified.